

OVERVIEW 2023



**CHITTAGONG
PORT AUTHORITY
CHATTOGRAM**



OVERVIEW 2023



**CHITTAGONG
PORT AUTHORITY
CHATTOGRAM**

1. HISTORICAL BACKGROUND

The history of Chittagong Port can be traced back to the 4th century BC. During the 9th to 15th century AD, Chattogram was known as 'SHETGANG' to early European mariners. In the 16th century, Chattogram was known as 'PORTE GRANDE'. The port was established at its present location in 1887 under the British Law.

2. LOCATION

Chittagong port is situated in the estuary of the river Karnaphuli; being around 11 km from the Bay of Bengal.

3. NAVIGATIONAL INFORMATION

Maximum Permissible Draught of vessel ranges from 8.50m. to 10.00m.

Online Tidal data display :

Khal no. 10 :

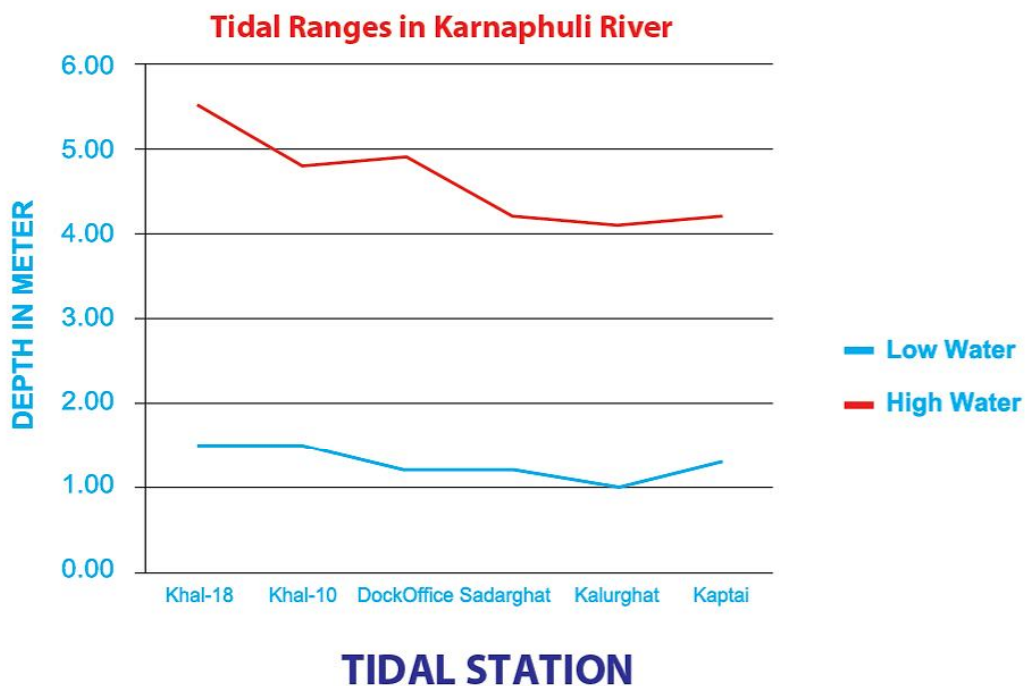
<https://stormcentral.waterlog.com/public/cpahydrography1/>

Kalurghat : <https://stormcentral.waterlog.com/public/cpahydrography2/>

Rezukhal : <https://stormcentral.waterlog.com/public/cpahydrography3/>

Bay Terminal : <https://stormcentral.waterlog.com/public/cpahydrography4/>

LOA : Maximum permissible LOA of a vessel is 190 meters.



Tidal Range : Tides are important for navigation as it determines the possibility of crossing the shallow area between Kutubdia points and the Karnaphuli entrance and bars within the Port Limit. Tides are semi diurnal with prominent diurnal effect. The approx. tidal range is between 2.0 and 5.5m.

Pilotage : Pilotage is compulsory as per CPA Law.

Radio communication : Port Radio Control Room maintains watch on VHF over Channel 6, 12 & 16 round the clock and over 2182 KHZ/SSB transceiver.

Anchorage : Anchorage area is divided to "A" "B" and "C". In addition a special anchorage area has been established for vessel awaiting employment.

Night Navigation : Inward and outward movement of the ships are limited to 200 metre length over all (LOA).

4. ADMINISTRATION

Chittagong Port passed through different model of port management. It started its journey as port commissioner, then turned into port trust and from 1976 it became Chittagong Port Authority under law.

5. GLOBAL POSITION OF CONTAINER PAST

Chittagong Port entered in 100 container port list with 98th position in 2009; after 12 years in 2021 it is ranked 64th busiest container port in the world.

FACILITIES

Jetties And Moorings For Ocean-going Vessels :

Berths owned and operated By CPA	
General Cargo Berths (GCB)	12
CCT	03
NCT	05
PCT	03
Repair Berths	
Dry Dock Jetties	02
Service Jetty	01
Mooring Berths	
Dolphin Oil Jetty	08
Specialised Berths for Bulk handling :	
Grain Silo Jetty	01
Cement Clinker Jetty	01
TSP Jetty	01
CUFL Jetty	01
KAFCO Urea Jetty	01
KDDJ	02
Total	40
Sadar Ghat	
Jetty Berths (for Lighter)	03 + 01

CARGO STORAGE SPACE (Break-bulk)

Shed Type	Shed no.	Location	Area (Sq. Metre)
Transit Sheds	1, 2, 3, 4, 5, 6, 7	GCB	38507.24
CFS	6, 8, 9, 12, 13, N	GCB	54217.71
CFS	1	CCT	13,250.00
CFS	1	NCT	4,000.00
CFS	1	NOFY	13,000.00
CFS	1	PCT	2,130.00
CFS	1, 2, 3, 4	Kamalapur ICD	7,050.00
Chemical Shed	P	GCB	2,822.95
Car Shed	F	GCB	8,696.63
Car Shed	1	Out side GCB	20,242.00
Open Dumps	Between shed no. 1 to 13	GCB	28,884.00

For Inland Coasters & Vessels :

Jetty Berths (for POL)	01
Concrete Berth (for Grain handling)	01
Pontoon Berths (for POL)	03
Pontoon Berth (for Cement)	01
Single Point Moorings	14
Total	20

Outside Protected Area :

Warehouses	6	25179.36
Open Dumps	-	2,00,000

Food Department (Grain Silo), TSP Complex, Cement Clinker Grinding Company and different oil companies have their own storage facilities (covered and open) adjacent to their respective berths.

Container Handling Facilities

Name of Container Yard	Location	Area (Sq. Metre)
General Cargo Berth	GCB	371,481.00
Chittagong Container Terminal	CCT	150,000.00
NCT Backup	NCT	289,450.00
North Container Yard (NCY)	NCY	57,416.00
South Container Yard	SCY	60,500.00
Newmooring over flow Yard	NOFY	115,000.00
Yard Behind Incontrade Container Depot	ICD	35,000.00
Patenga Container Terminal	PCT	66,797.00
Pangaon Terminal	PT	51,410.00
Kamalapur ICD	KICD	135,530.00

LIST OF CARGO AND CONTAINER HANDLING EQUIPMENT (A) Container Handling Equipment

Type of Equipment	Capacity (Ton)	Nos.
Quay Gantry Crane	40	18
Rubber Tyred Gantry Crane	40	47
Rail Mounted Yard Gantry Crane	40	01
Mobile Harbour Crane	84	05
Straddle Carrier (04 High)	40	44
Straddle Carrier (02 High)	40	01
Reach Stacker	45	17
Forklift (Spreader)	16	04
Reach Stacker	07	06
Container Mover	32	10
	Total	153

(B) Cargo Handling Equipment

Type of Equipment	Capacity (Ton)	Nos.
Mobile Crane	100	02
Mobile Crane	50	06
Mobile Crane	30	02
Mobile Crane	20	14
Mobile Crane	10	13
Forklift Truck	20	08
Forklift Truck	10	16
Forklift (Truck (High Mast)	5	10
Forklift Truck (Low Mast)	5	41
Forklift Truck (Low Mast)	3	78
Forklift-Elec. (Low Mast)	1.5	04
Tractor	25	06
Heavy Trailer	25	05
Light Trailer	06	30
Tele Handler	10	04
Car Carrier	06 Cars	02
Pipe Handler	30	01
Variable Reach Truck	16	03
Bagging Machine	-	02
Pneumatic Conveyor	-	01
Total	-	248

EQUIPMENT BEING PROCURED UNDER PROJECT

Type of Equipment	Capacity (Ton)	Nos.
Rubber Tyred Gantry Crane	40	05
Straddle Carrier (04 High)	40	21
Straddle Carrier (02 High)	40	06
Reach Stacker	45	04
Variable Reach Truck	40	04
Mobile Crane	30	02
Mobile Crane	20	12
Mobile Crane	10	23
Log Handler/Stacker	10	02
Forklift Truck	20	04

Material/Multi Handler	35	01
Low Bed Trailer	-	02
Tractor for Low Bed Trailer	-	02
Total		88

INLAND CONTAINER DEPOT (ICD)

An Inland Container Depot (ICD) at Dhaka, Kamalapur is in operation since 1987 with an annual handling capacity of 90,000 TEUs. (At present three Approximate) Container Trains run daily each way between Chittagong Port and Dhaka ICD.

Facilities available :

Container holding capacity	3500 TEUs
Yard Area	1,85,670 Sq.m
Container Freight Station (CFS)	3546.39 Sq.m
Weigh-bridge	1 No
Equipment Reach Stacker (45 ton) :	5 Nos.
Forklift :	2 Nos.
Reach Stacker (16 ton):	2 Nos.
Low Mast Forklift (3 ton) :	3 Nos.
Tractor Trailors :	10 Nos
Railway Wagons for Container Transportation	450 Nos
Railway Terminal (length of tracks)	552.68 m
Fire Brigade	1 Unit

ICT PANGAON

Container Holding Capacity	3500 TEUs
Yard Area	55000 sq. m.
Container Freight Station (CFS)	5815 sq. m.
Weigh-bridge	1 No
Equipment	
Mobile harbour Crane	1 No
Straddle Carrier	2 Nos
Fork Lift	9 Nos
Tractor Trailors	2 Nos
Cargo Cranes	3 Nos

ICT PANGAON

Type of Equipment	Capacity	Present Total Nos	Remarks
Stand by Diesel Generator Set.	2.0MW, 11KV out. put	11	For continuous uninterrupted Power Supply throughout the Port area in case of power failure from BPDA sources.
Stand by Diesel Generator Set.	2.5 MW. 11KV out put	01	For continuous uninterrupted Power Supply throughout the Port area in case of power failure froms BPDB sources.
Solar Panel Power System	68 KW with 4hrs	4 Set	For lighting system of PAB main Building. Bay-Terminal, South container yard and Rest House in Dhaka.
High mast for lighting arrangement inside Port Protected area	30 M.	181	For Proving sufficient light throughout the port protected area for night time Port operation & Security purposes.
Reefer Point Facilities	440V	2010	For providing power supply to Reefer Container in Port Project area.

DREDGER

The CPA has a trailing suction hopper dredger (MV KHANAK) to maintain navigability in its area. The dredger has a hopper capacity of 2,500 cubic meters.

TUGS : The CPA has a fleet of Tugs up to a maximum bollard pull of 70 Tons and 5000 BHP.

ENVIRONMENT FACILITIES

One oily waste reception & one solid waste reception vessel is available for pollution control service. In addition some of the tugs are equipped with pollution control facilities.

FIRE FIGHTING ARRANGEMENTS

The CPA maintains a full fledged Fire Fighting Unit within the jetty premises with modern equipments to combat any incidents of fire. The sheds, warehouses and the yards are provided with sprinklers, hydrant system with different types of fire extinguishers and fire buckets. Facilities are also available for combating marine fire with fire fighting vessels.

SECURITY

CPA is complying with International Ship and Port Facility Security Code (ISPS Code) since 2004 for enhancing safety and security within Port Limit in a manner as desired by the code.

WEIGH-BRIDGE

There are 7 (seven) computerized road vehicle weigh-bridges (30T-100T) at different jetty gates and North Container Yard (NCY). And one computerized railway wagon weigh-bridge (100T) located at the Railway Transit Yard. There are also 3 nos of computerized truck weighing scales (100T) installed at two stage gate under custom over bridge at GCB area.

Vessel Traffic Management Information System (VTMIS) :

Chittagong Port and its anchorage areas are covered by modern VTMIS to ensure maritime safety and safety of navigation. Moreover, Matarbari Radio Control Station has been established to control & monitor Maritime Traffic visiting Matarbari.

SIMULATOR

Training Program through combined Simulator for safe and smooth Container handling operation of Straddle Carrier (SC), Rubber Tyred Gentry Crane (RTG) and Ship to Shore Gentry Crane (STS) are running since 2014 successfully. It keeps a vital role to create a pool of skilled and efficient operators. Procurement for another Combined Simulator for Rail Mounted Gentry Crane, Mobile Harbor Cranc, Reach Stacker, Container handler, fork lift, Container Trailer (Truck) and Ship Crane is under Process, Simulator Training on different module can facilitate the public and private organizations to cater for the demand of national and international job market to provide skilled manpower.

CPA AUTOMATION

As a part of customization of port automation system and upgradation, CPA aims to automate existing processes through "Consolidation, integration and upgradation of CPA's existing ICT based facilities/systems as per TOR". The automation work includes the development of an online software system to perform operations of CPA and upgradation of database for more efficiency and security. Besides, CPA will become more paperless institution through the implementation of the CPA automation.

6. STATISTICS

6.1 MAJOR IMPORTS & EXPORTS

Import : Food grain, Cement clinker, Sugar, Fertilizer, General cargo, Iron Materials, Cotton, Chemicals, Coal, Edible oil, POL etc.

Export : Ready Made Garments, Knitwear, Fertilizer, Jute & Jute Products, Hides and Skins, Tea, Light Engineering products, Pharmaceutical Products, Naphtha, Molasses, Frozen goods, etc.

6.1 Import (In Metric Tons)

C/YEARS	FOOD GRAIN	C/CLINK	FERT.	COAL	SALT	SUGAR	E.OIL	POLS	BULK OTHERS	BULK TOTAL	CONT. IMPORT	TOTAL IMPORT
2018	5765413	24010721	1814808	1993225	392920	2129358	2835106	8011491	22792378	69745420	19441453	89186873
2019	6312007	25680976	1646047	3982570	426514	2199186	2570359	7622239	25266171	75706069	20251923	95957992
2020	6767725	26528874	1406391	4067789	347109	2422873	2556745	6368644	26404508	76870658	19629008	96499666
2021	5062785	34921601	1655825	3042992	421806	2229495	2328097	8531882	27852057	86046540	22622623	108669163
2022	3465002	35298309	2310546	3751986	461600	2486392	2286296	11058845	29436990	90555966	21279095	111835061

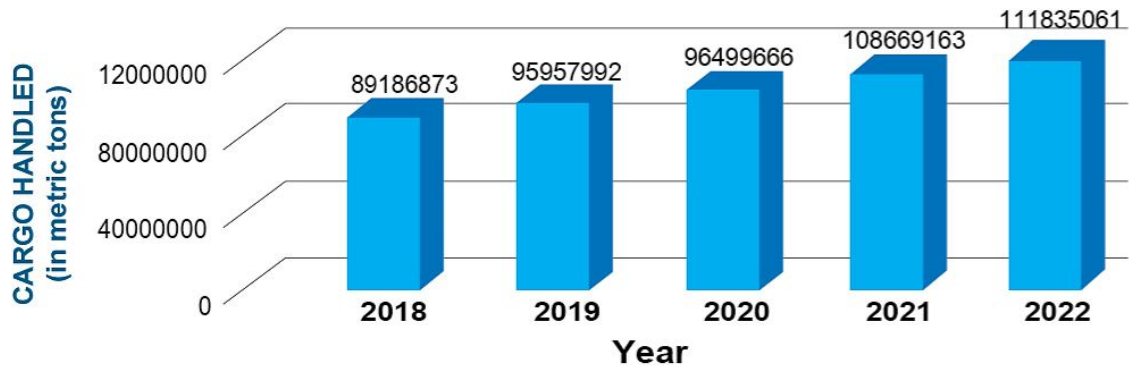
Export (In Metric Tons)

C/YEARS	JUTE	J/GOODS	LEATHER	TEA	GARMENTS	F/GOODS	CONTAI, OTHERS	TOTAL CONT	UREA/FERT.	AMMONIA	NAPTHA	BULK OTHERS	BULK TOTAL	TOTAL EXPORT
2018	159427	642685	32772	13	3592989	103583	2395102	6926571	0	42457	15000	140323	197780	7124351
2019	169747	538027	35440	195	3320490	104974	2698147	6867020	0	54975	17890	179859	252724	7119744
2020	186162	473134	22603	0	2973140	114867	2675817	6445723	0	63325	0	201010	264335	6710058
2021	145349	426653	29112	18	3735420	156712	3002029	7495293	19500	131870	18800	284532	454702	7949995
2022	123674	440854	25767	1673	4084390	144267	2804868	7625493	0	28500	0	176628	205128	7830621

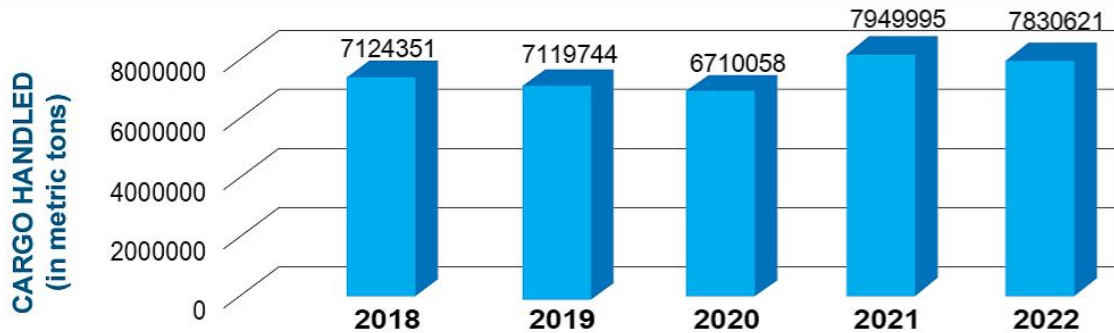
6.2. CARGO HANDLED (in metric tons)

C/Years	Grand Total (In M/T)	
	Import	Export
2018	89186873	7124351
2019	95957992	7119744
2020	96499666	6710058
2021	108669163	7949995
2022	111835061	7830621
		Total
		96311224
		103077736
		103209724
		116619158
		119665682

Cargo Handled (IMPORT)



Cargo Handled (EXPORT)

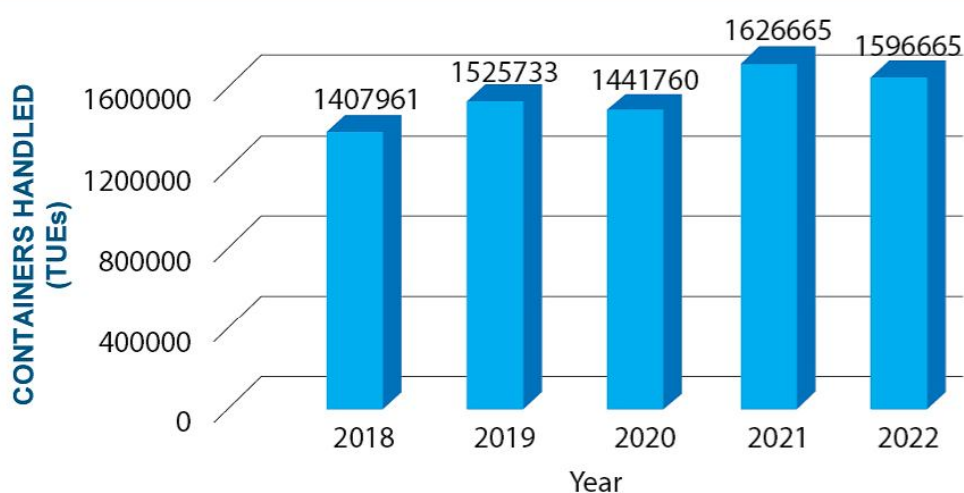


6.3 CONTAINERS HANDLED

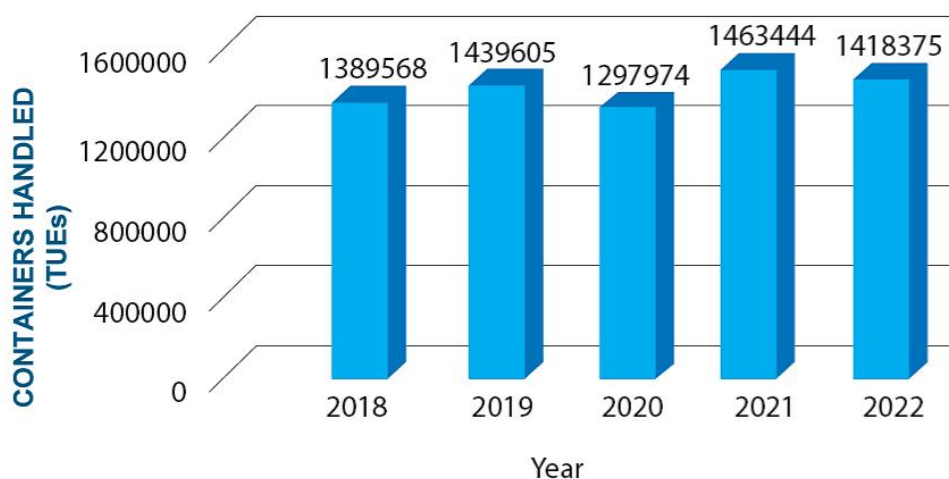
CALENDAR YEAR	CHITTAGONG PORT					
	IMPORT		EXPORT		TOTAL	
	TUEs	TONS	TUEs	TONS	TUEs	TONS
2018	1407961	18949356	1389568	6773244	2797529	25722600
2019	1525733	19666175	1439605	6699896	2965338	26366071
2020	1441760	19143667	1297974	6311784	2739734	25455451
2021	1626665	21979093	1463444	7376909	3090109	29356002
2022	1596665	20643763	1418375	7457459	3015040	28101222

CALENDAR YEAR	DHAKA ICD					
	IMPORT		EXPORT		TOTAL	
	TUEs	TONS	TUEs	TONS	TUEs	TONS
2018	42507	348978	41453	149511	83960	498489
2019	47537	370137	47835	157827	95372	527964
2020	39405	317863	40338	128210	79743	446073
2021	48589	441135	48372	114222	96961	555357
2022	50687	454295	50718	152815	101405	607110

Container Handled Chittagong Port (IMPORT)



Container Handled Chittagong Port (EXPORT)



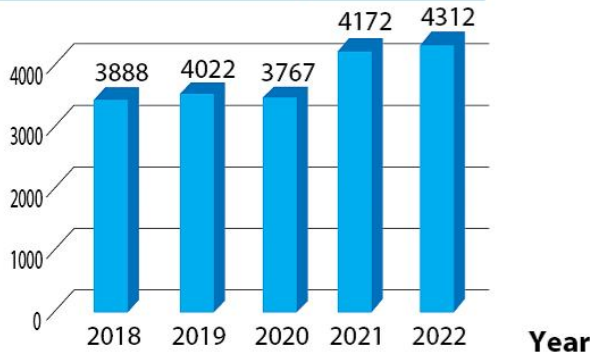
6.3.1 CONTAINERS HANDLED AT DHAKA ICT (PANGAON)

CALENDAR YEAR	Inland Container Terminal Pangaon (ICT)					
	IMPORT		EXPORT		TOTAL	
	TUEs	TONS	TEUs	TONS	TEUs	TONs
2018	11232	143119	11275	3816	22507	146935
2019	14073	215611	13404	9297	27477	224908
2020	10063	167478	10437	5729	20500	173207
2021	13877	202395	13601	4162	27478	206557
2022	13023	181037	13036	15219	26059	196256

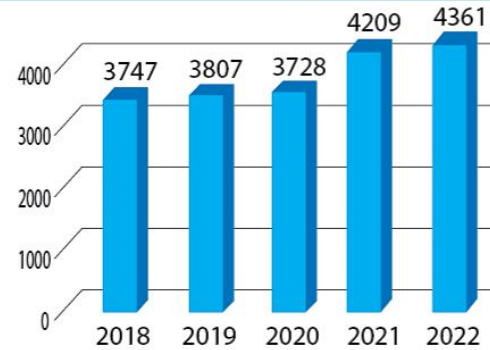
6.4 VESSELS HANDLED

C/YEAR	NO. OF INCOMING VESSELS	NO. OF OUTGOING VESSELS
2018	3888	3747
2019	4022	3807
2020	3767	3728
2021	4172	4209
2022	4312	4361

Vessels Handled (Incoming)



Vessels Handled (Outgoing)



6.5 CARGO HANDLED INCLUDING INLAND, ICD & ICT (in metric tons)

CALENDAR YEAR	IMPORT (TONS)	EXPORT (TONS)	INLAND (TONS)	ICD (TONS)	ICT (TONS)	GRAND TOTAL (TONS)	GROWTH (%)
2018	80478515	6971024	8216261	498489	146953	96311224	12.98
2019	87943773	6952620	7428471	527964	224908	103077736	7.03
2020	89847015	6576119	6167310	446073	173207	103209724	0.13
2021	100905259	7831611	7120374	555357	206557	116619158	12.99
2022	102797069	7662587	8402660	607110	196256	119665682	2.61

7. CONCESSION ON EXPORT CARGO

Priority berth is allowed to 100% export vessels.

For efficient handling of export through container, 100% stuffing is being done in private depot located near the port.

Seven days free time for export cargo/container is allowed as against four days free time on import cargo/container.

Documentation procedure simplified through introduction of one stop service centre.

8. OTHER INFORMATION

Handling Capacity : At present Port is handling over 41 million tons of cargo per year.

Repair : Chattogram Dry Dock can repair vessels up to 20,000 DWT and there are also a number of other private repair yards in and around port installation. Newly built service Jetty is operational for CPA owned ships.

Airport : Hazrat Shah Amanat International Airport is 8 km from the port.

Chattogram Export Processing Zone : Located 3 km away from the port.

Korean Export Processing Zone : Located on the opposite bank of the river Karnaphuli.

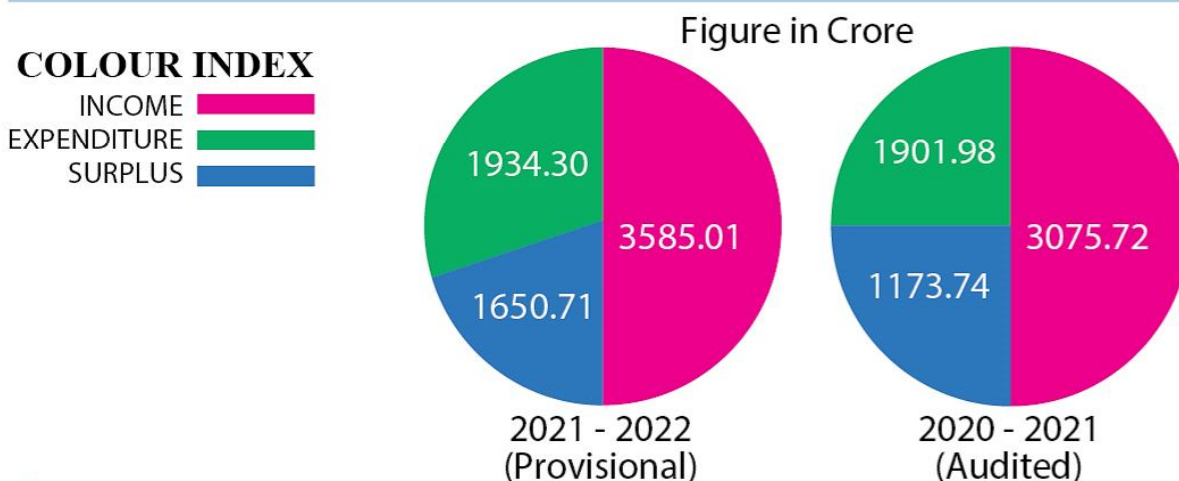
Karnaphuli Export Processing Zone : Located 4 km away from the port.

Hinterland Transportation : Port is connected with the hinterland by Road, Rail & River.

One Stop Service : All documentation earlier done at different points regarding Container and General Cargo Clearance has now been brought at one point with on-line banking facilities.

Car storage facilities : Available space for 6,150 unit Vehicle including New Car Shed. CPA is a regular member of Japan based International Association of Ports and Harbours (IAPH).

9. REVENUE INCOME & EXPENDITURE



10. DEVELOPMENT PLAN

A. RECENTLY COMPLETED PROJECTS :

- ▶ Strategic Master Plan for Chittagong Port.
- ▶ Chittagong Port Trade Facilitation Project (CPA Component).
- ▶ Construction of Back-up Facilities Behind Berth # 4 and 5 of New-mooring Container Terminal.
- ▶ Installation of Vessel Traffic Management Information System (VTMIS).
- ▶ Procurement of One high Power Tug (4500 BHP).
- ▶ Procurement of One Sea Going Water Supply Vessel.
- ▶ Procurement of 29 Nos. Container and Cargo Handling Equipment.
- ▶ Procurement of Three Reconditioned Container Vessels to ply Chattogram-Pangaon Route.
- ▶ Installation of Surface Water Treatment Plant.
- ▶ Procurement of one Modern Survey Boat with Multibeam Echo-Sounder.
- ▶ Procurement of Equipment for New Mooring Container Terminal (NCT).
- ▶ Construction of overflow yard at new-mooring colony.
- ▶ Construction of 2nd overflow yard at new-mooring colony.
- ▶ Procurement of two mobile harbour crane.
- ▶ Construction of CPA Hospital Complex.
- ▶ Shifting and Re-construction of Services Jetty located near Dock Office to the Upstream of Jetty No. 1.
- ▶ Construction of Potenga Container Terminal (PCT)
- ▶ Procurement of Two High-Power Tugboats (5000 BHP/70 Tons Bollard Pull)

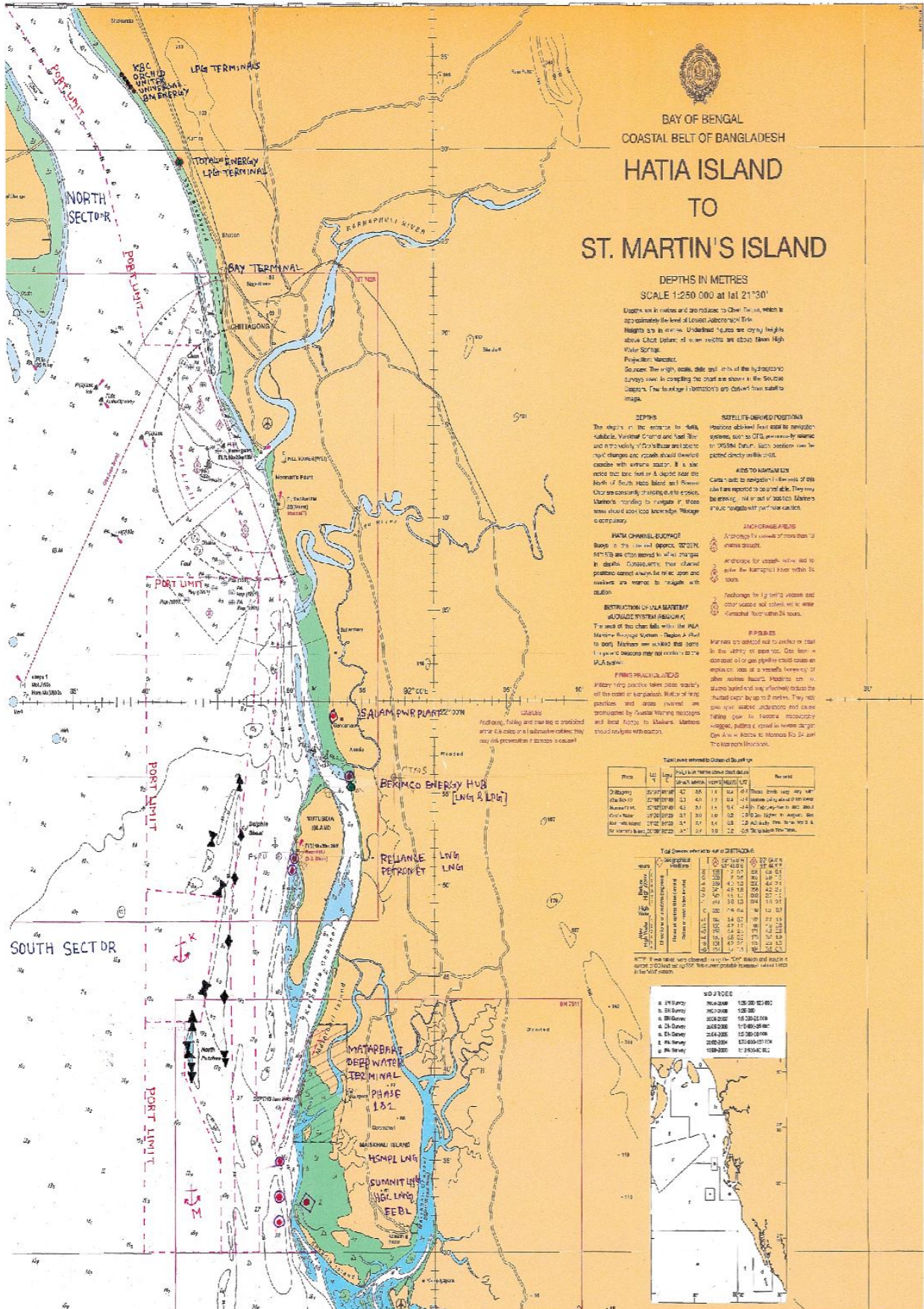
B. ON GOING PROJECTS :

- ▶ Enhancement of navigability in Karnaphuli River through Dredging from Sadarghat to Bakalia char.
- ▶ Procurement of Necessary Equipment for Various Yards And Terminals of Chittagong Port.
- ▶ Matarbari Port Development Project.
- ▶ Installation of Container Scanner at Export gate to implement ISPS Code in Chittagong Port.
- ▶ Construction of Bay Terminal.

C. FUTURE PROJECTS :

- ▶ Construction of Heavy Lift Cargo Jetty With Back-Up Facilities.
- ▶ Installation of Container Scanner at Export gate to implement ISPS Code in Chittagong Port.
- ▶ PCT Operation Handling in SOT basis.
- ▶ Matarbari Port Development Project (Stage-1, Phase-2).
- ▶ Matarbari Port Development Project (Stage-2).
- ▶ Construction of Port Administration Building (PAB).

Chittagong Port Area Map





CHITTAGONG PORT AUTHORITY

🏠 Bandar Bhaban
Po. Box No. - 2013
Chattogram - 4100
Bangladesh.

☎ 02-333322200-29 (Pabx)
📠 88-02-333310889, 333319510
➔ chairman@cpa.gov.bd
secretary@cpa.gov.bd
info@cpa.gov.bd

🌐 Website: www.cpa.gov.bd